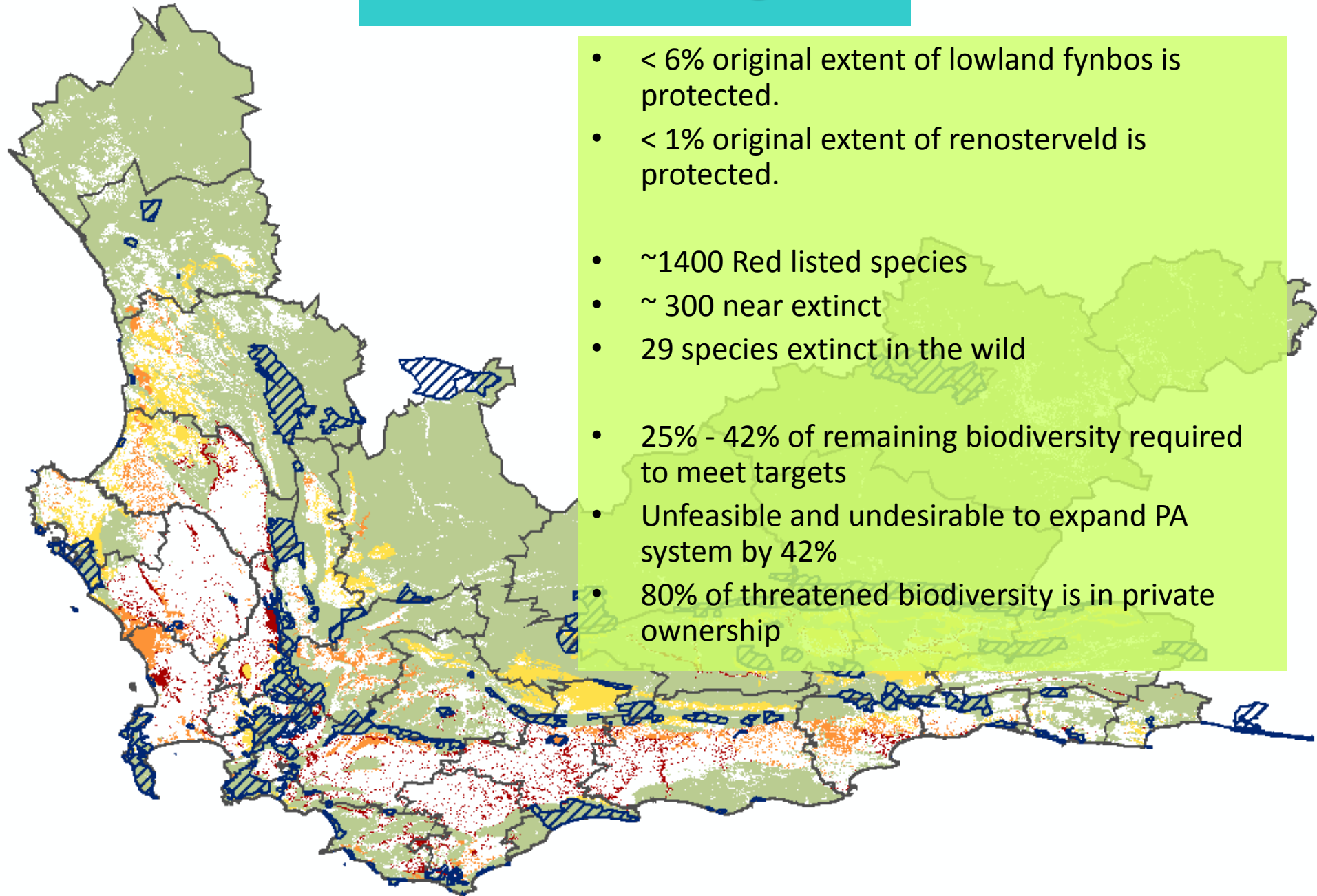


Landscape Initiatives Knowledge Exchange 2009

Moving Towards Sustainability

The challenge

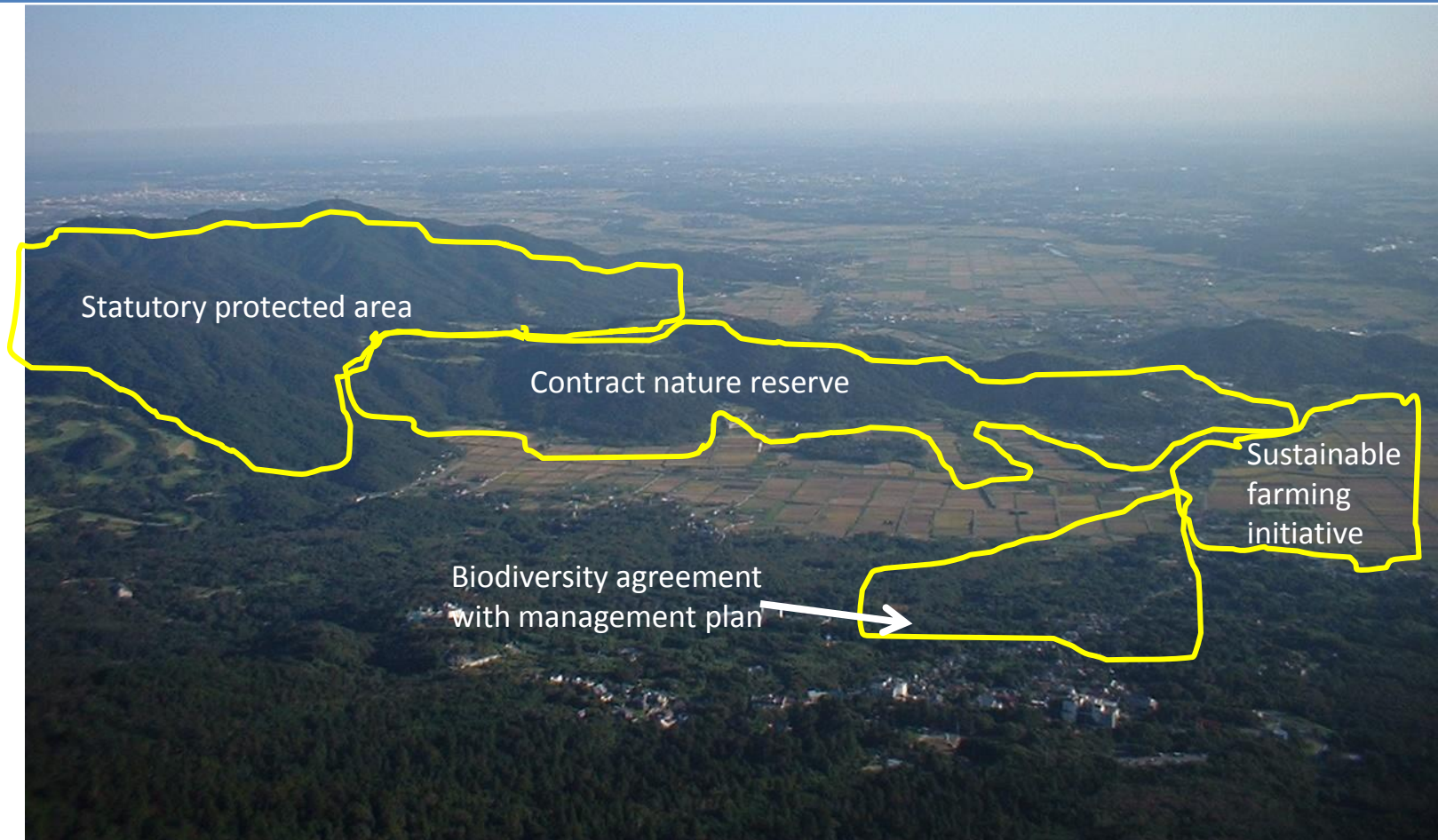
- < 6% original extent of lowland fynbos is protected.
- < 1% original extent of renosterveld is protected.
- ~1400 Red listed species
- ~ 300 near extinct
- 29 species extinct in the wild
- 25% - 42% of remaining biodiversity required to meet targets
- Unfeasible and undesirable to expand PA system by 42%
- 80% of threatened biodiversity is in private ownership



Standard View of a Landscape



Our View of the Landscape



Key elements of landscape initiatives

- Multi-stakeholder landscape-wide conservation initiatives
- Include priority biodiversity areas and areas providing ecosystem services
- Designed to maintain or restore connectivity across the landscape
- Some designed to build ecosystem-based resilience to climate change e.g. N-S or mountain-sea corridors
- Involve government and civil society role-players united around a common vision
- Have protected areas as the core, work across broad landscape
- Seek to improve strategic coordination of natural resource management activities
- Seek to leverage resources for joint projects that promote biodiversity conservation and socio-economic benefits

Model 1: A Section 21 Company – ABI?

- Non-profit organisations (NPOs) do not exist to make a profit but to serve some public purpose
- 3 basic NPO types: Voluntary Associations, Trusts & Section 21 Companies
- Section 21 Companies must register with the Registrar of Companies under the Companies Act, may also register under the NPO Act
- Their founding documents are the Memorandum and Articles of Association
- They must have 7 or more members
- They have no shareholders, and surpluses are put back
- Members are not liable for debts
- They can raise funds to support their work
- Audited financial statements must be made public

Model 2: A Biosphere Reserve – GI, GRI?

- Conservation area which benefits both the natural environment and the communities in and around it
- Included in the World Network of Biosphere Reserves by the International Coordinating Council of the Man and Biosphere (MAB) programme of UNESCO - international recognition & status
- May include terrestrial, freshwater, coastal and marine areas
- Three zones:
 - **CORE:** most ecologically sensitive and pristine area, conservation is a priority, low-impact activities allowed (e.g. hiking, birding)
 - **BUFFER:** less ecologically sensitive but mostly natural area, allows recreation (e.g. camping, boating, mountain biking), and sustainable use (e.g. fishing, flower harvesting)
 - **TRANSITION:** least ecologically sensitive area with variety of land uses (e.g. farms, commercial plantations and towns)

- New W Cape Bill sets out requirements for Management Committee and framework plan, may also have technical committee
- Process involves:
 - applying to the MEC responsible for land-use planning for preliminary approval
 - establishing a Biosphere Reserve Interim Committee
 - applying for official UNESCO designation as biosphere reserve
- MEC “may give financial or other assistance in respect of the establishment, operation, management, extension of, or conservation within, a biosphere reserve”
- Currently a small annual grant from Dept of Environmental Affairs & Development Planning

Model 3: Steering committee with lead agency - GCBC, BMR?

- Conservation agency e.g. Eastern Cape Parks or CapeNature takes the lead in coordinating a multi-stakeholder partnership initiative
- Donor funds are channelled through the agency as an implementing agency
- Partners may report on all their work that contributes to the broader goals of the initiative
- Joint projects are fundraised for and coordinated towards agreed common goals and targets
- Steering committee can be just for coordination, or have a role in overseeing or advising on the project funding

Key questions for all models

1. Much of what has made our LIs **special** up until now has been their broad and inclusive nature....
2. How do we ensure that **civil society** continues to play a significant role – NGOs, CBOs, landowners, commercial entities?
3. How do we ensure that **government** depts, municipalities and conservation agencies also play a key role?
4. If there are two structures, how do we enable **integration** and prevent isolation or one becoming the “real” structure?
5. Is there additional space for a regular **broad forum** in addition to these structures, like the GI Forum?
6. Is there a distinct role for an **environmental or activists’** organisation, like KOBIO, OICG?