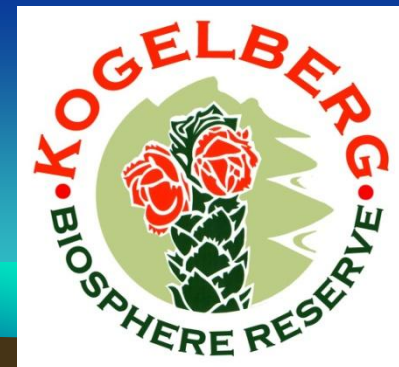
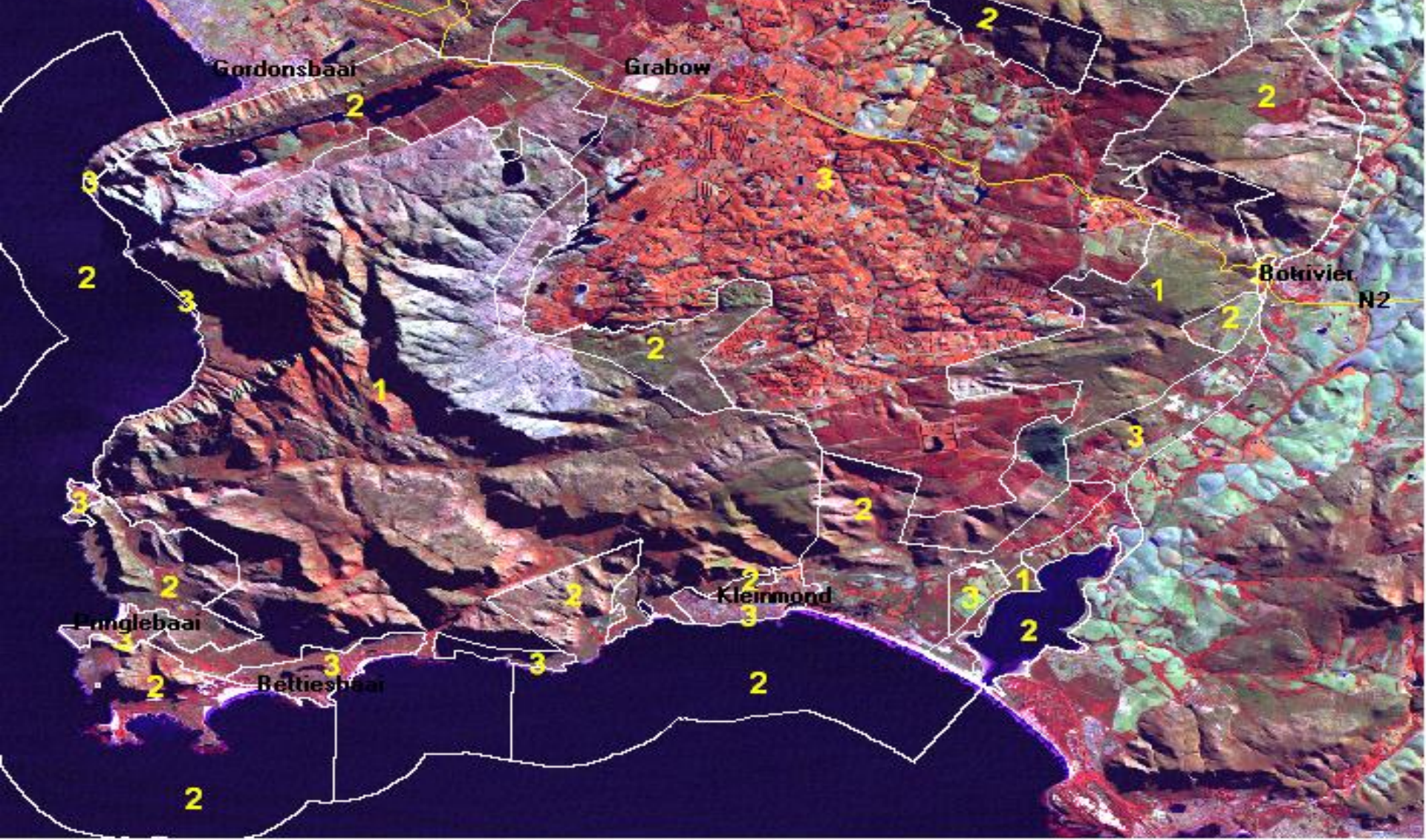


# Kogelberg Biosphere Reserve Background

- Registered with UNESCO in 1998
- 103 000 ha – terrestrial area
- 24 500 ha Marine Protected Area
- Host 1600 species of fynbos
- Heart of the Cape Floral Kingdom
- Registered 2002 as a Section 21 Company not for gain



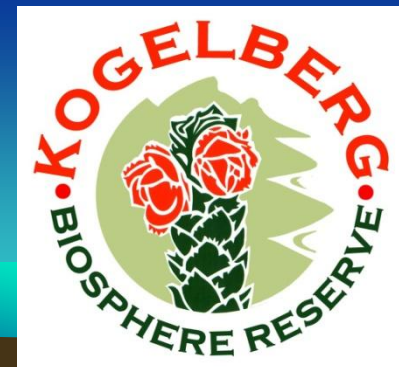
- 1. Core
- 2. Buffer
- 3. Transition – Agriculture & Residential Areas



# Economic driver

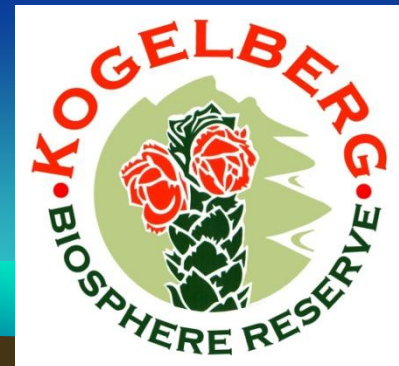


- Tourism attraction
- People buy property - land and seascapes
- Eco-Tourism potential



# Impact on biodiversity

- Inefficient management of municipal land
- Inappropriate developments
- Insufficient manpower to execute management tasks



# Significant Conflict and Problems

- Residential development
- Poaching – Fynbos and Marine

