

CAPE Conference 2011
**CONSERVATION AND
AGRICULTURE**

Johan Bothma

 **AGRI**

WES-CAPE • WES-KAAP

UNITY IN AGRICULTURE | EENHEID IN LANDBOU



CONTENTS

1. The organisation as a public roleplayer
2. Agriculture as land-user and custodian of land
3. Promotion of environmental awareness
4. Sustainable agriculture through proactive action
5. Challenges
6. Closing remarks



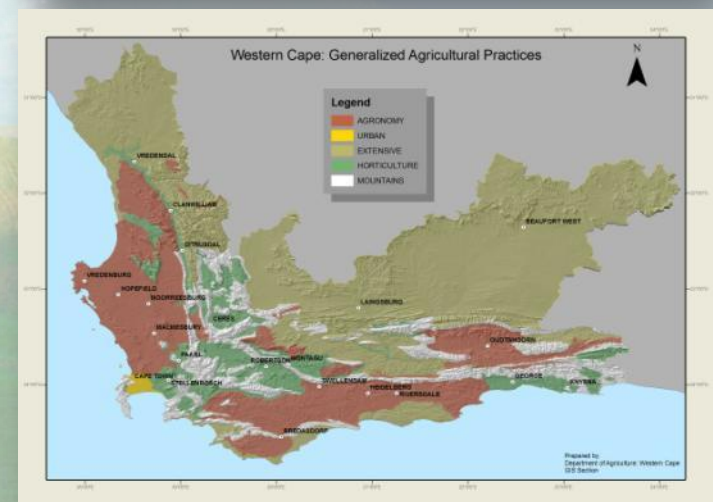
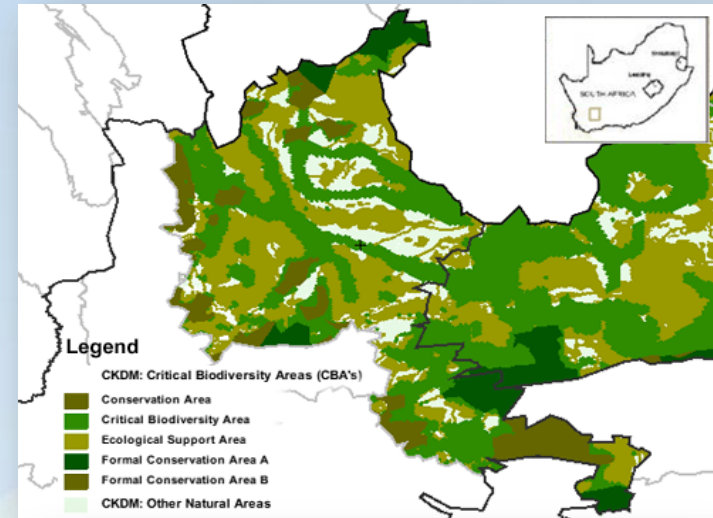
1. THE ORGANISATION AS PUBLIC ROLEPLAYER

- Structure
- Objectives
- Code of Conduct
- The economic realities of agriculture



2. AGRICULTURE'S USE & CUSTODIANSHIP OF LAND

- Conservation-worthy landscapes and biodiversity mostly occur on farms
- Agriculture is the single biggest user of ecosystem goods and services
- Agriculture is dependent on healthy ecosystems
- Farmers are the primary custodians of the environment
- Conservation targets cannot be achieved without agriculture's support

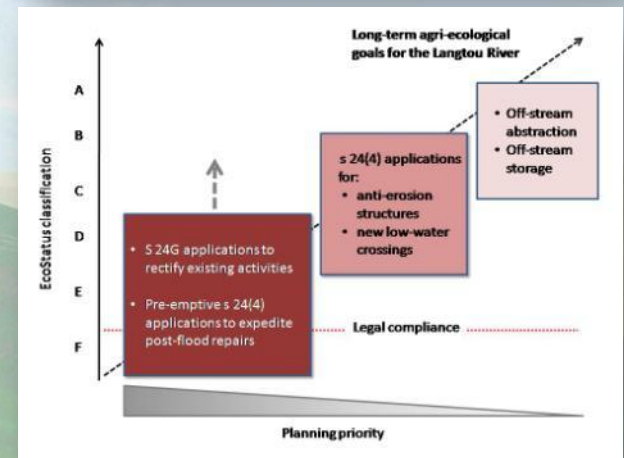
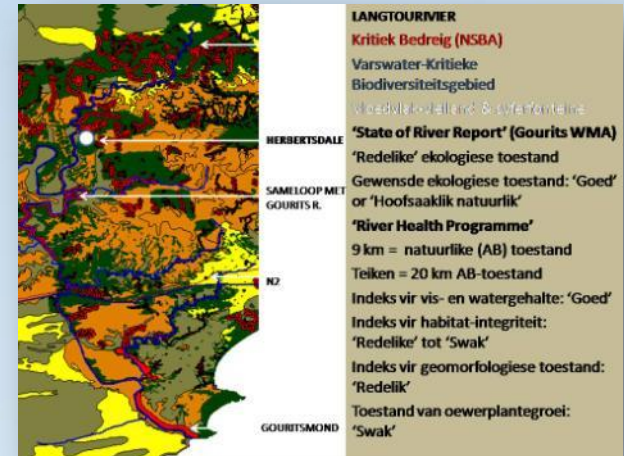


3. PROMOTION OF ENVIRONMENTAL AWARENESS

- Agri Wes-Cape Code of Conduct
- Agri Wes-Cape Nature Resources Policy Committee
- Guideline for farmers on prospecting and mining procedures
- Agricultural and environmental comment on prospecting, mining and development applications
- Management of damage-causing animals

4. SUSTAINABLE AGRICULTURE THROUGH PROACTIVE ACTION

- Co-ordination of the Agri-EMF project with LandCare (since June 2007)
- Langtou River Pilot Project: Phases I & II (Table Mountain Fund) (since July 2008)
- Agricultural inputs to government policy:
 - Draft Spatial Development and Land Use Bill
 - National EIA and Management Strategy
 - Participation in “Upper Breede Conservation Extension Group”



5. CHALLENGES

- **Opportunity costs of biodiversity conservation for agriculture**
 - Compensation for rural communities
- **NEMA EIA system does not work in agricultural contexts**
 - High costs & red tape
 - Minimal environmental benefits
 - Command and control is not delivering the desired results
- **Need to promote sustainable agriculture through good strategic planning and management**
- **Green Empowerment, NOT Green Dispossession**

6. CLOSING REMARKS

- Agriculture is part of the solution BUT is unfortunately excluded from the Provincial Planning and Development Forum
- We want to encourage positive attitudes towards conservation for the sake of future generations
- Environmental legislation has serious shortcomings – e.g. law enforcement in flood and emergency situations
 - Lack of appreciation for realities faced by farmers
 - Government departments and farmers are treated differently by the state
 - Theory and practice are not aligned
 - Long waiting periods
- **The situation needs to be revisited to ensure equal treatment of all parties**





AGRI
WES-CAPE • WES-KAAP

UNITY IN AGRICULTURE | EENHEID IN LANDBOU

THANK YOU



UNITY IN AGRICULTURE | EENHEID IN LANDBOU

Ph 021 860 3800



UNITY IN AGRICULTURE | EENHEID IN LANDBOU



UNITY IN AGRICULTURE | EENHEID IN LANDBOU