

Landscape Initiative Knowledge Exchange 2009

Some History



The Garden Route Initiative is a partnership programme that seeks to coordinate the conservation and restoration of the unique biodiversity and sense of place in the Garden Route, while supporting the sustainable management of the region and the delivery of benefits to local communities.



SANParks provides the institutional home for the Garden Route Initiative Project Management Unit (PMU), and employs the GRI PMU staff, including the GRI Coordinator and the GRI Stewardship Extension Officers.



The GRI is supported by a grant from the Global Environment Facility (GEF) through the World Bank to SANParks. This GEF grant forms part of a much larger investment into the C.A.P.E. (Cape Action for People and Environment) Programme across the fynbos region.

Who did what and where? The GRI Stewardship Working Group

Extract from GRI Stewardship Partnership Brochure



SANParks has an interest in working with the owners of land in the catchment areas and linking corridors that affect the National Parks, to ensure the appropriate management of biodiversity on their properties, and so that we have a healthy ecologically functioning “living landscape” in the Garden Route.



Outside of the formally protected areas, CapeNature implements a private landowner stewardship programme which offers interested private landowners various levels of protection for their properties depending on the conservation value of the land.



Eden to Addo’s mission is: “To assist landowners to identify and develop a living corridor from Eden to Addo by applying sound land-use practices, encouraging a diversity of livelihoods and linking ecologically important areas.” Eden to Addo is formally established as a Section 21 (not for profit) company.

Who's doing what and where now? The future of the GRI



In transition to:

GARDEN ROUTE BIOSPHERE RESERVE



Policy decision to terminate stewardship activities within GR National Park; BUT supportive of establishing Biosphere Reserve



Continuing with Stewardship activities as before; supportive of Biosphere Reserve; MOU with Eden to Addo for pilot PE



Continuing with Stewardship activities as before; leading establishment of Biosphere Reserve with WESSA and Eden DM; employment of GRI Stewardship staff to maintain presence in SANParks corridors;

1. Map: Currently working on boundaries with Gouritz Biosphere

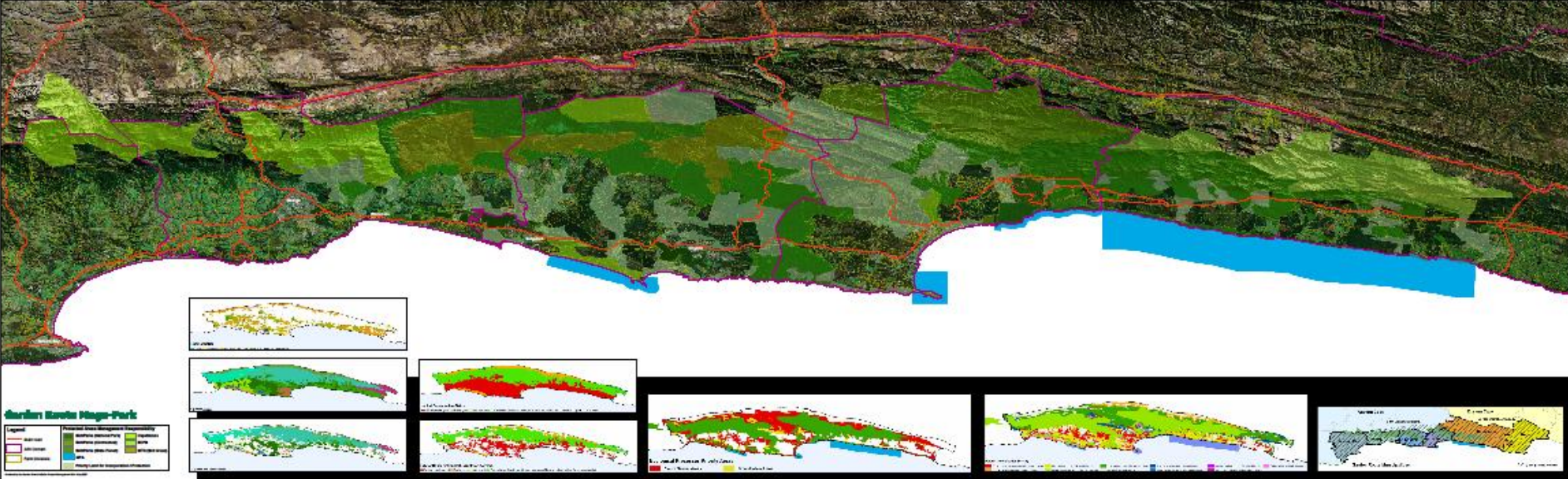


Garden Route Mega-Park Priority Areas

Mapbook

Version 1.1 July 2007

Incorporating the interim Garden Route Rapid Biodiversity Planning - Beta version 1



2. Coordination



Structures and sub-structures of Proposed Biosphere Reserve:

- S21 Company
- Advisory Committee (Eden DM, CapeNature, SANParks, E2A, Local gt etc)
- GR Biosphere Stewardship Working Group (for buffer and transitions zones)
- Stakeholder Forum

Who will be represented?

- S21 Company - members and directors ?
- Advisory Committee – Eden DM, Local gt, CapeNature, SANParks, Eden to Addo, WESSA, BotSoc, DWEA, DAF etc (similar to old GRI Steercom)
- GR Biosphere Stewardship Working Group: CapeNature, SANParks, Eden to Addo
- Stakeholder Forum - members?

Objectives:

- Contribute to the conservation of a vulnerable coastal landscape
- Enhance human endeavour (social, economic and cultural)
- Support ecologically sustainable development
- Support education and research related to the environment and human activities

Plans for change – Not yet anyway!

3. Posts



What positions within proposed GRBR and funding for them:

None but funding proposals are being prepared:

- TMF - R280 000
- DEADP - R181 000
- Eden District Municipality - R74 000

Who initiates meetings and overseas work?

Currently the old GRI Steering Committee and a task team for the Biosphere Reserve

What commitments have been made towards funding posts?

None yet

4. Projects and Programmes



Joint work:

- Task Team for Biosphere reserve is: WESSA, Eden to Addo X2, Eden District Municipality, GRI
- Eden to Addo MOU with CapeNature for the declaration of a PE
- Eden to Addo stewardship officer facilitated Biodiversity Agreement between landowners and CapeNature
- Eden to Addo employed GRI Stewardship officers after contract with SANParks ended

Future work that is funded

Partners continue with their projects until GRBR properly functional, then jointly funded projects will be developed

Fundraising for other priorities

Not yet